

Meaningful investing

Stichting Hoogbouw
Bezoek Fenixloods
Syntrus Achmea
Edvard van Luijn

Our vision

**Asset management
for a
sustainable future**



Our policies are based on the **United Nations Sustainable Development Goals (UN SDGs)**.



Health and well-being

We invest in safe and healthy communities, where everyone can enjoy living, working and pursuing leisure activities.



Sustainable and affordable energy

We promote the use of clean energy that's affordable to all.



Sustainable cities and communities

We provide funding for, and invest in, stable communities, also for future generations.



Responsible consumption and production

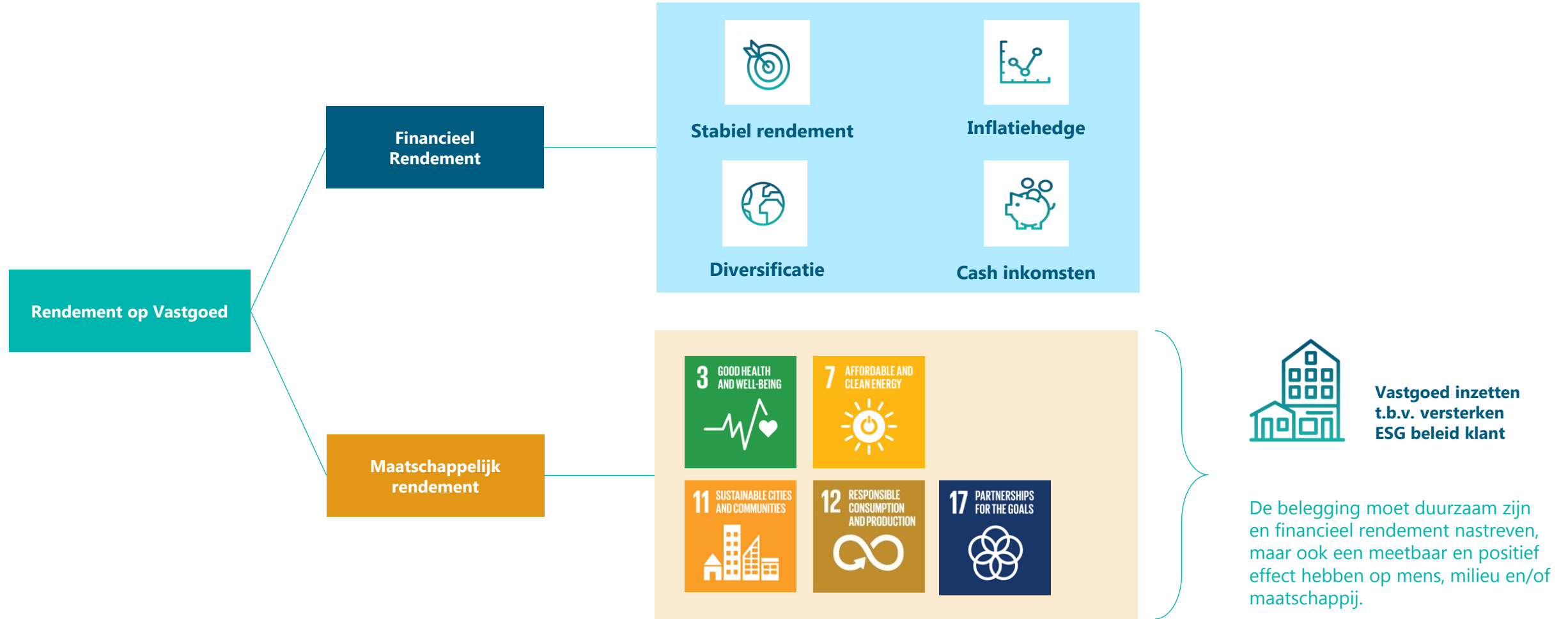
We only invest in real estate that is built and managed using sustainable practices.



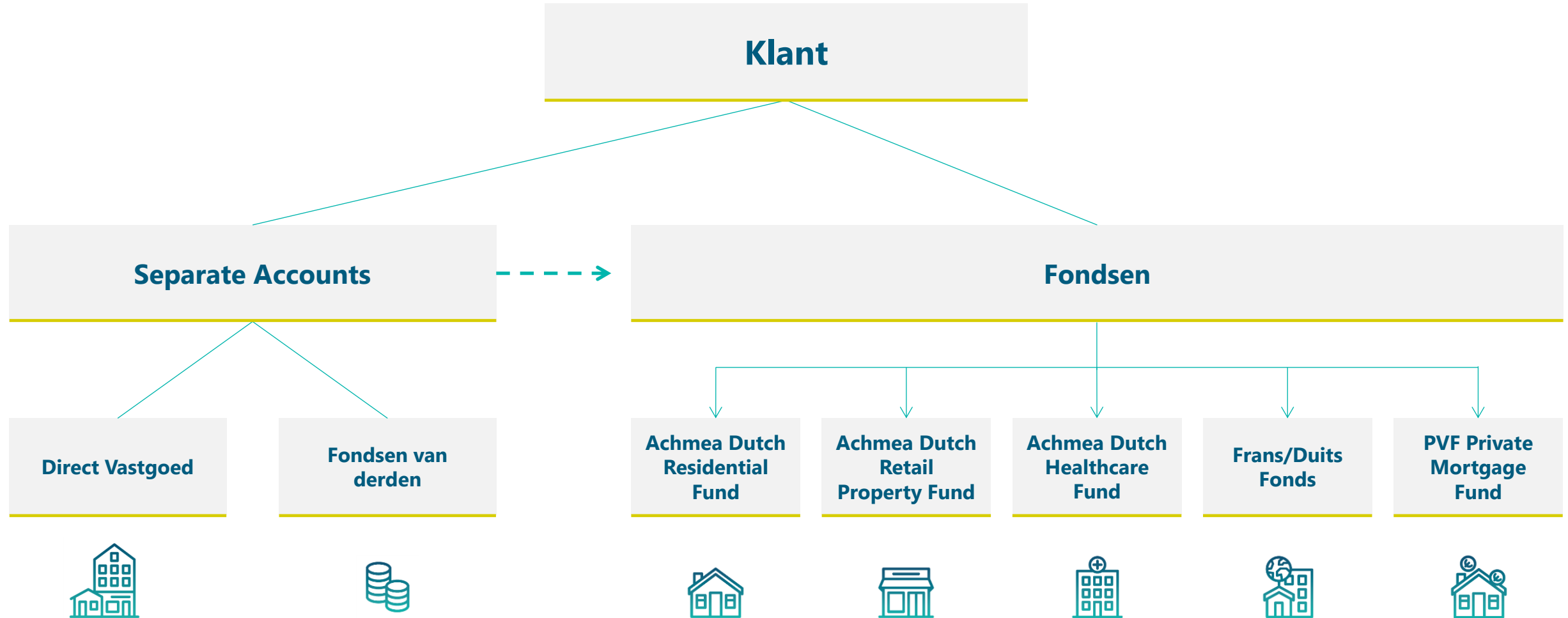
Partnerships focused on sustainability

We build and maintain close partnerships in order to achieve our objectives.

Financieel- en Maatschappelijk rendement gaan hand in hand



Dienstverlening bij Syntrus Achmea Real Estate & Finance



Company Profile

€ 21.3

assets under management

- Largest asset management firm in the Netherlands specialising in real estate and mortgages and operating in the institutional investment market

More than 60

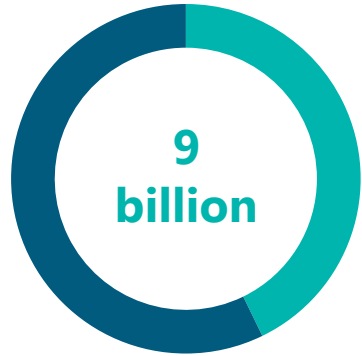
clients

- Dutch institutional investors (mainly pension funds and insurers)

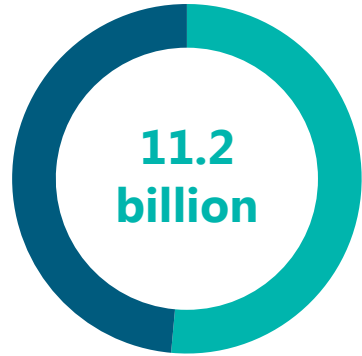


-
- Full range of services
 - Expertise in, and operating across, the entire real-estate supply chain
 - Property development for client portfolios
 - Value creation through rental and budget optimisation and conversions
 - Extensive (political) network, national and local

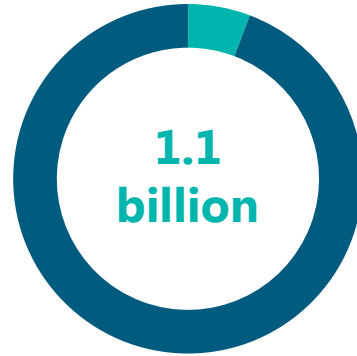
AUM and fte's Syntrus Achmea Real Estate & Finance Q2 2018



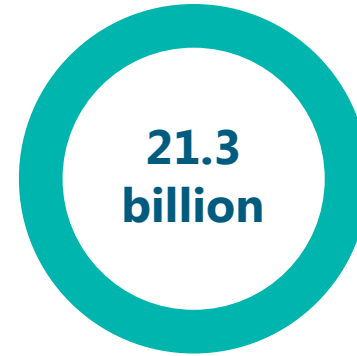
Dutch Real Estate



Mortgages



International Real Estate



Total



467 fte's

Residential	5.9 bn.
Retail	1.8 bn.
Offices	0.5 bn.
Healthcare	0.4 bn.
Other	0.4 bn.

Residential	9.7 bn.
Commercial	1.5 bn.

Europe	0.6 bn.
North America	0.3 bn.
Asia	0.2 bn.

Referentie

Transformatie



Transformatie



Auto's delen



Maatschappelijk



Studenten



Transformatie



Zorg



Onderwijs



FENIXLOODS, KATENDRECHT ROTTERDAM





In 2005 zagen wij
al de potentie in
Katendrecht

Geschiedenis

In 2007 heeft Syntrus Achmea al geïnvesteerd in Katendrecht

Syntrus Achmea kocht met Pensioenfonds Landbouw twee posities in Katendrecht op de Bananenstraat in 2007

Posities zijn doorverkocht aan Rabovastgoed (BPD) en via de gemeente aan Heijmans in 2015

Met Heijmans hebben we vervolgens de Fenixloods opgestart.



**Syntrus Achmea
is Stadspartner en
wijkbelegger**

Algemene informatie

- Project Fenix loodsen behelst ruim 200 appartementen;
- Syntrus koopt 78 huur appartementen en 78 bergingen. Fonds: BPL Bedrijfspensioenfonds Landbouw
- Oppervlakte 60-68 m² en 81-97 m²
- Huurprijzen ca. € 850 – 1125 p/mnd,
- Programma bestaat uit: horeca, detailhandel, commerciële ruimten
- Parkeergarage onder het gebouw. Wordt extern geëxploiteerd.;
- Aansluiting op een WKO i.c.m. Stadsverwarming.
- Start Bouw is 23 november 2015.
- Oplevering: Q3 – 2019.